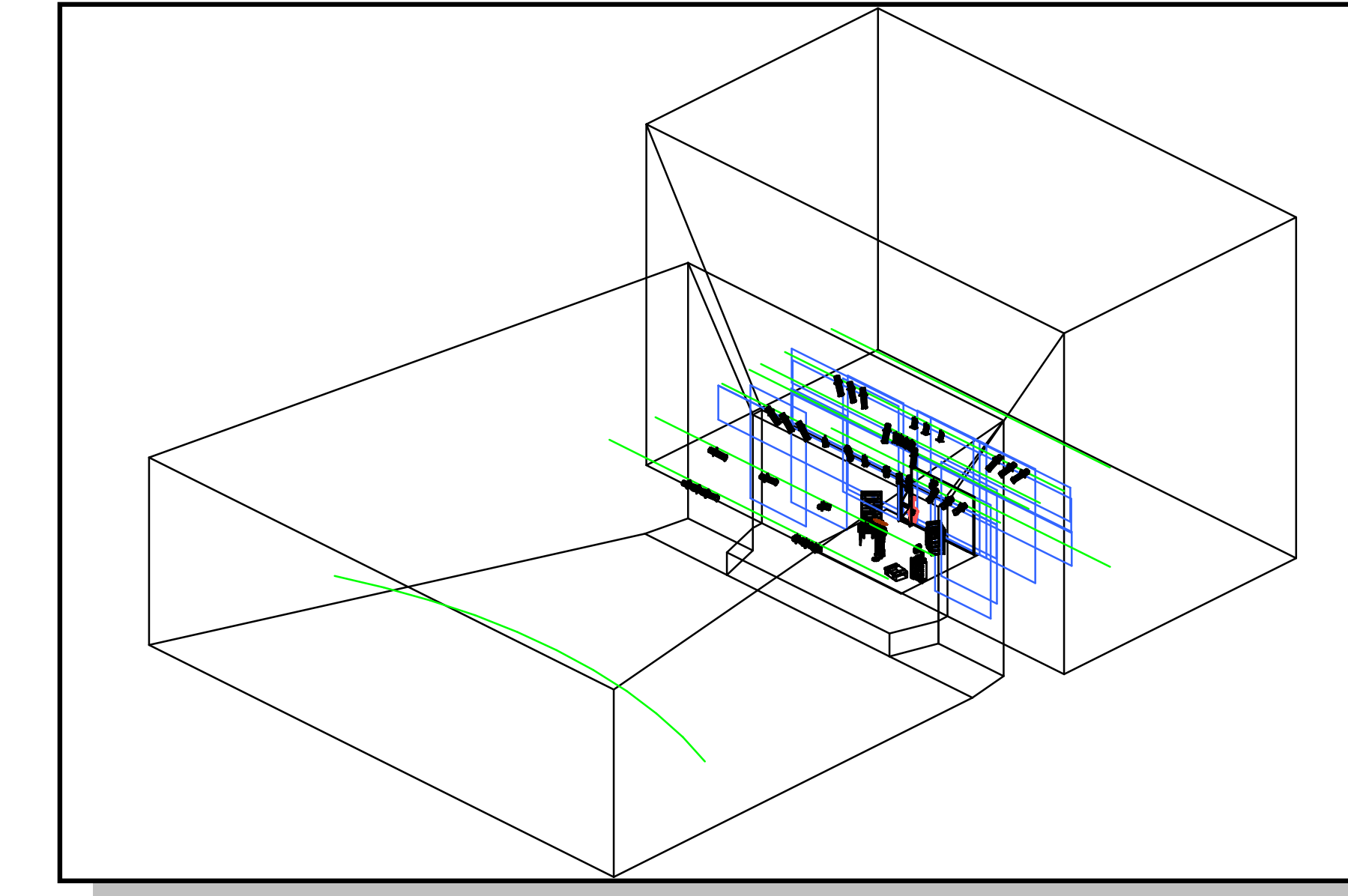
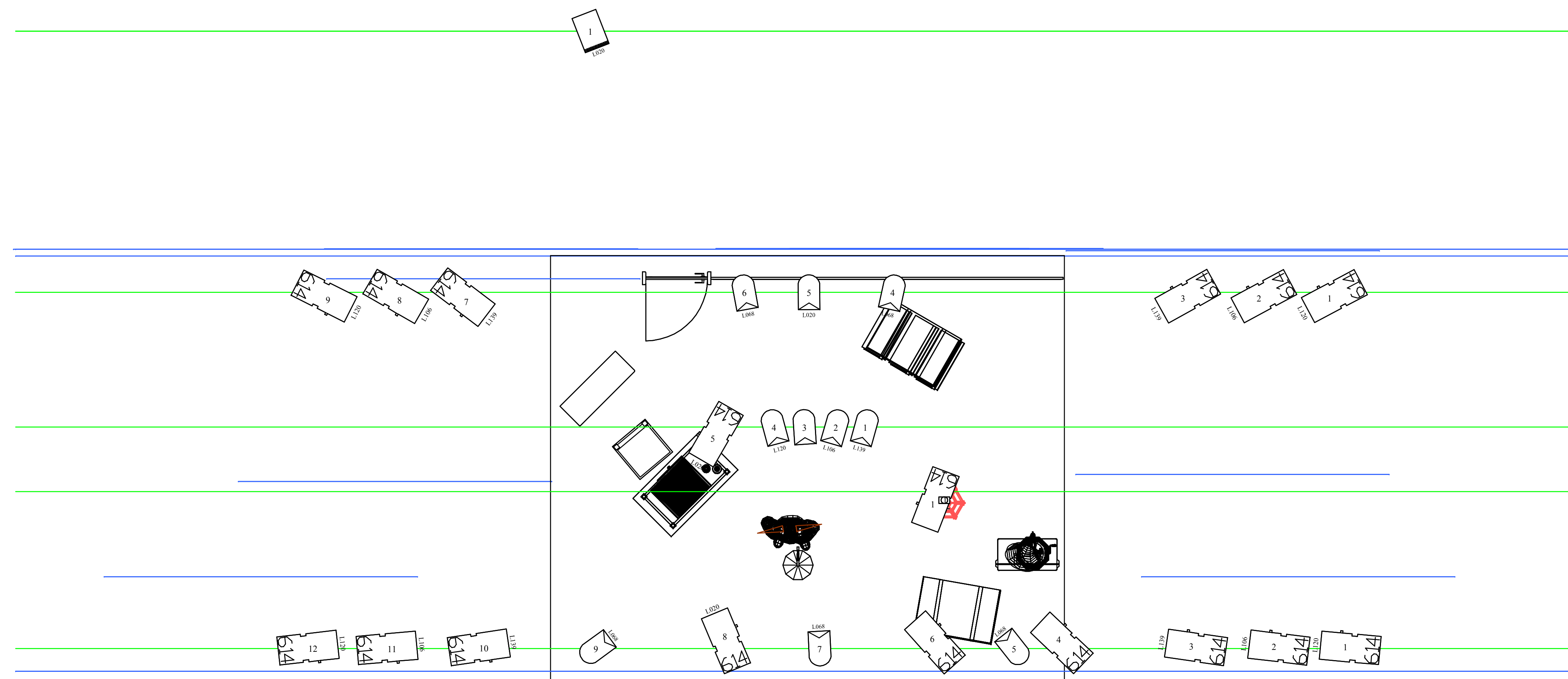


PLAN - 1/4" = 1'



Instrument Count (All Layers) 08/20/2015

Venue: %Designer% Show: %Show%
 Designer: %Designer% Assistant: %Assistant%

Type	Lens	Count	Status
329 HPC		1	HUNG
614SX		27	HUNG
Bulb Strip w/ 1 bulb		1	HUNG
PAR 64		10	HUNG

Electronic Accessories (All Layers) 08/20/2015

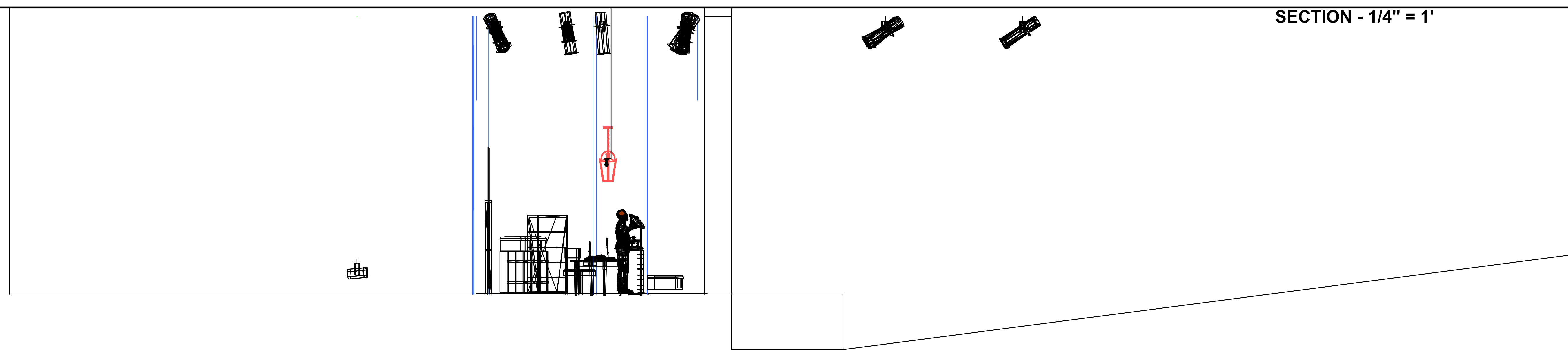
Venue: %Designer% Show: %Show%
 Designer: %Designer% Assistant: %Assistant%

Type	Count
Loading Data	

Colour Count (All Layers) 08/20/2015

Color	Type	Count
L001	10' Colour Frame	1
L002	329 HPC Colour	1
L003	Frame	1
L004	614SX Colour Frame	2
L068	10' Colour Frame	5
L106	10' Colour Frame	1
L106	614SX Colour Frame	6
L120	10' Colour Frame	1
L120	614SX Colour Frame	6
L139	10' Colour Frame	1
L139	614SX Colour Frame	6

SECTION - 1/4" = 1'



NOTES

- Atmosphere machines USR
- All fixtures to have safety chains
- Opto splitters to be supplied where necessary
- termination on all DMX
- rigging safety gear to be supplied by house
-
- see technical requirement for other fixtures needed
-
-

WOW

Lighting Design:	BOUCHEKER KARL
sound designer:	BENSIFI SAMI
Director:	HOUSCH MA HOUSCH
Scenic Design:	HOUSCH MA HOUSCH
Venue:	(All Layers)
Zero Date:	
Printed:	08/20/2015
Printed By:	
File:	wow2.wyg